



DS-FS02-01

VALVOLE MANUALI

Manual radiator valves

Serie Floral old style

Valvole manuali utilizzabili per l'intercettazione dei fluidi negli impianti di riscaldamento. Tutte le valvole sono dotate di codolo con autotenuta in gomma per facilitare l'installazione.

Manual radiator valves for the interception of fluids in heating systems. All the valves are equipped with a tailpiece with rubber self-sealing to facilitate the installation.

ART. 0339 0340

Valvole manuali attacco per tubo rame e multistrato
Manual radiator valves, connection for copper and multilayer tubes

ART. 0337 0338

Valvole manuali attacco per tubo ferro
Manual radiator valves, iron tube connection



Valvole a squadra
Angled radiator valves



Valvole via dritta
Straight radiator valves





PRESTAZIONI

Fluidi d'impiego	Acqua, soluzioni glicolate
Percentuale di glicole max	30%
Max pressione d'esercizio	10 bar
Max Temp. d'esercizio	100°C

PERFORMANCE

Employed fluids	Water, antifreeze solutions
Max. percentage of glycol	30%
Max working pressure	10 bar
Max working temperature	100°C

MATERIALI E CARATTERISTICHE TECNICHE

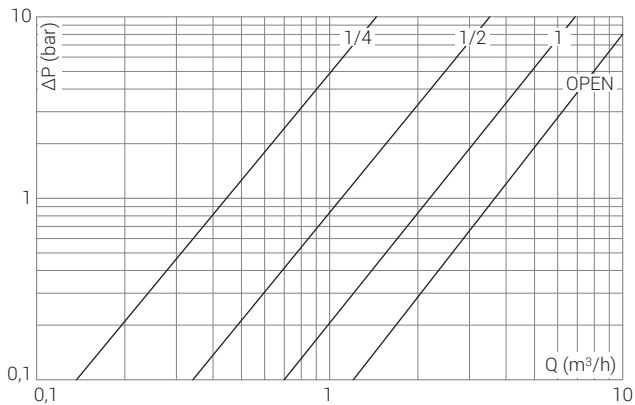
Corpo	
Calotta	Ottone stampato: CW617N UNI EN 12165
Volantino	
Componenti interni	Ottone trafilato: CW614N UNI EN 12164
Elementi di tenuta	Gomma EPDM PEROX

MATERIALS AND TECHNICAL FEATURES

Body	
Nut	Pressed brass: CW617N UNI EN 12165
Handwheel	
Inside components	Extruded brass: CW614N UNI EN 12164
Seal elements	EPDM PEROX rubber

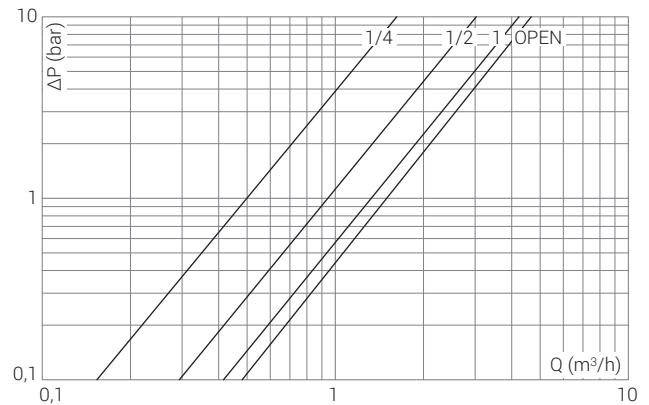
Diagrammi Diagrams

0339 0337 Valvole a squadra
Angled radiator valves



POS	1/4	1/2	1	OPEN
Kv	0,46	1,13	2,21	3,83

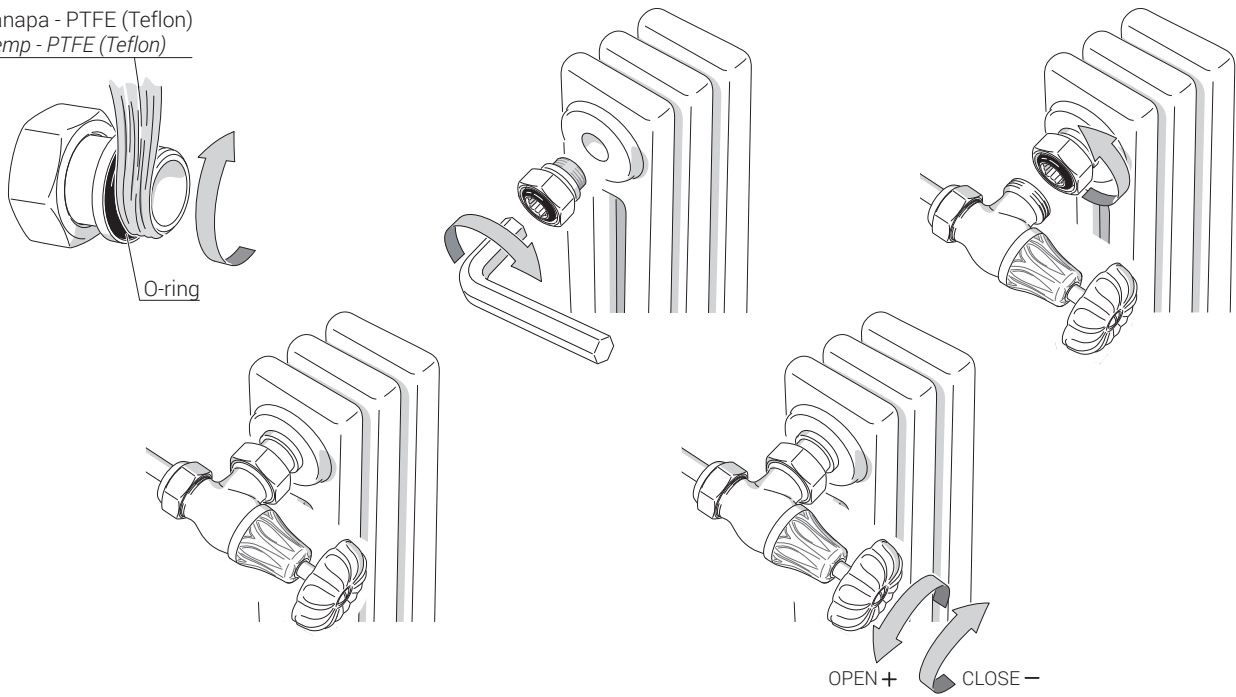
0340 0338 Valvole via diretta
Straight radiator valves



POS	1/4	1/2	1	OPEN
Kv	0,50	0,92	1,41	1,54

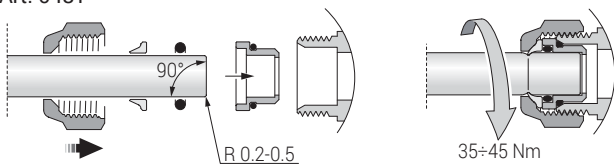
Istruzioni Instructions

Canapa - PTFE (Teflon)
Hemp - PTFE (Teflon)

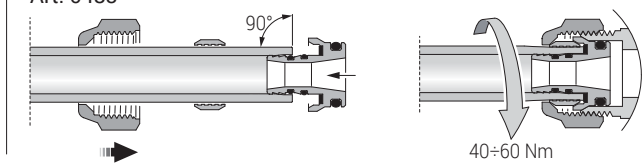


Installazione raccordi Connection installation

Art. 0481

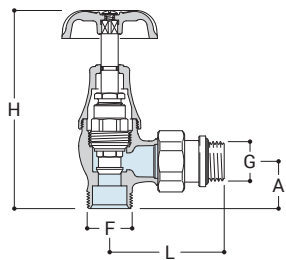


Art. 0483



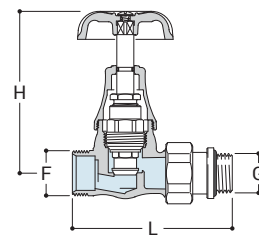
Disegni Drawings

0339



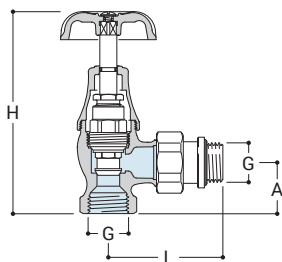
G	F	H	A	L
1/2"	24x19	105	25	61

0340



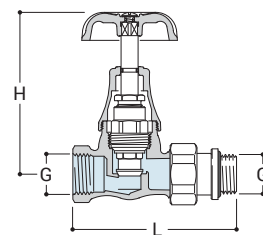
G	F	H	L
1/2"	24x19	86	85

0337



G	H	A	L
1/2"	107	27	61

0338



G	H	L
1/2"	86	87



0481

Raccordo per tubo rame a tenuta O-Ring.

Copper tube connection with O-ring seal.



0483

Raccordo per tubo multistrato.

Multilayer tube connection.



0301

Adattatore 1/2" F x 24/19 F

Adaptor 1/2" F x 24/19 F.



0027

Prolunga per valvole (30 mm).

Extension for radiator valves (30 mm)



0030

Eccentrico per radiatori.

Cam for radiators.



0402

Codolo telescopico

Telescopic tailpiece



0031

Raccordo 1/2" con tubo saldato ø 15 mm.

1/2" connection with welded pipe ø 15 mm.



0490

Rosetta

Wall plate



0497

Kit copritubo tondo floreale (2 pezzi).

Round floral pipe cover set (2 pcs).



A497

Kit di collegamento tondo floreale (2 pezzi), ø 15 mm, lunghezza 150 mm x 1/2".

Round floral connection set (2 pcs), ø 15 mm, length 150 mm x 1/2"



0322

Tappo per radiatore.

Radiator cap.



0327

Valvolina sfogo aria manuale in ottone.

Brass manual air-vent valve.